



# Cooperative Customers

品牌合作客户

鑫诺集团, 坚持以诚信为先, 以人为本, 质量为核心的经营理念, 与全国广大机构客户建立良好的合作关系。其中包含金融银行系统、医疗教育系统、科技IT系统、电力通讯系统、房地产系统、大型国企等不同类型客户机构。

Sinosure group, adhering to the business philosophy of "integrity first, people first and quality as the core", has established good cooperative relations with a large number of institutional customers across the country. IT includes different types of customer institutions such as financial banking system, medical education system, scientific and technological IT system, power communication system, real estate system and large state-owned enterprises.



品牌合作部分客户 (排名不分先后)

# CONTENTS

目录

J01 P16	S02 P018	P02 P020	Z02 P022	N01 P026
R02 P028	B01 P030	O01 P032	M02 P034	E01 P036
Q02 P040	A02 P044	Y02 P048	PF P052	T02 P054
SOFA P056	CHAIR P062			

基于不断研发改良的原则, 若产品实物与画册图片有所偏差, 请以实物为准。  
your received goods may be little different with this catalogue, always refer to the real one.



## J01 SERIES

以中国汉字、书法美学为基础及建筑风格创作而成。外观及产品文化主要是以“官”“宫”两个字形体及本身寓意出发展开设计，并采用隶书书法精髓圆润笔锋设计每个细节点。班台面整体造型采用了基本笔画“𠂇”隶书形态，左右侧柜形似“官”“𠂇”字两个口字矩形，整体又是根据中国鼎的造型来设计的。

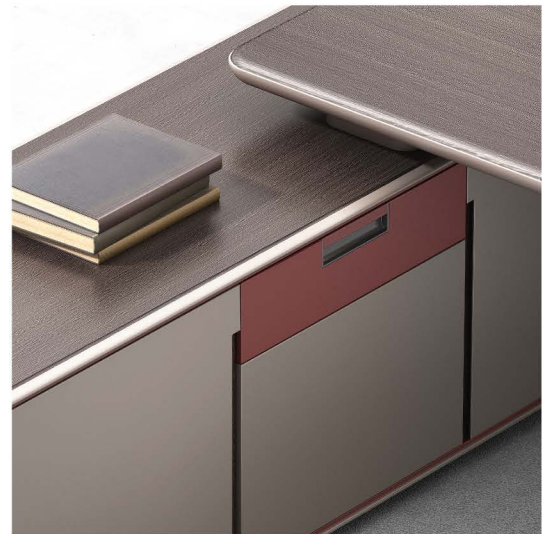
Based on Chinese characters, calligraphy aesthetics and architectural style. The appearance and product culture is mainly based on "官" and "宫" two characters shape and its own meaning to start the design.

## J01 SERIES MANAGER DESK

文件柜延续官帽宝盖头造型，从容坐镇、安定祥和的气势。  
The filing cabinet continues the official cap and treasure cover style, sitting calmly, stable and peaceful momentum.



辅台定位柜采用翻转式走线，台面的边型设计采用基本笔画隶书形态。  
Auxiliary station fixed position ark USES turn over type to take a line, the edge of mesa design USES basic brushwork official script configuration.



侧柜面板造型则是宝盖头的缩影，其边形采用宫廷皇家建筑飞檐的造型。  
The sideboard adopts the shape of cornice of royal building.

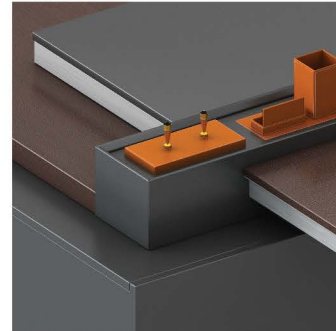




## S02 SERIES

S02系列外观简洁大方，别具匠心的台面分隔铝条，可增加台面层次感。金属斜边与木纹配合，尽显班台现代感。设计立足于客户需求，一切只为创造出一种有品质且舒适的精英办公空间。

S02 series appearance is concise and easy, the tabletop separates the aluminium strip, can add mesa layer feeling. The metal bevelled and wood grain cooperate to show the modern feeling of the class. Based on customer demand, all to create a quality and comfortable office space.



## S02 MEETING TABLE

方正大气的整体外观，台面通过铝合金饰边条让台面更显轻薄。利落的线条，分明的材质对比，展现出对平衡艺术的掌控。

The overall appearance of the square atmosphere, the mesa is made by the aluminum alloy edge strip to make the table more light and light. Sharp line, clear material contrast, show the control of balance art.





## P02 SERIES

P02系列以倾斜、斜面的设计风格为主要手法。金属框斜角、干练的线条、和谐的色彩等元素有机结合，让现代感艺术气息于极致简约的设计细节中油然而生。为简洁、舒适的办公环境，平添一份自在、优雅的现代办公感受。

P01 series the elements such as the angle of the metal frame, the lines of the dry and the harmonious colors are organically combined, so that the modern artistic atmosphere can be found in the design details of extreme simplicity. For concise, comfortable office environment, add a comfortable, elegant modern office feeling.



赫金檀橡木纹与倾斜桌脚形成鲜明对比，旨在创造出一种凸显个性化的办公空间；简洁的设计把创造力和想象力表现得淋漓尽致，精心勾勒出的利落线条，营造动感轻盈之感。

The wood grain is in sharp contrast with the tilt table foot, which aims to create an office space that highlights the individuality. Succinct design puts creativity and imagination incisively and vividly, elaborately delineates the sharp line, builds the sense of feeling lightness.





## Z02 SERIES

Z02系列是企业高级管理人员办公需求为出发点，霸气的设计、时尚的造型、强大的功能，不仅只停留于办公产品本身的性能，而是一种设计风格的展示及身份地位的象征。

Z02 series is senior management office demand as the starting point for the enterprise, the modelling of the avant-garde design, fashion, powerful features, not only stay in office the performance of the product itself, but rather a design style of display and status symbol.



## Z02 SERIES MANAGER DESK

Z02系列赋予大班台、文件柜、会议、洽谈桌等每一件系列产品内外兼修的气韵，整个系列在外观上都传承了传统办公家具的设计元素，在细节上运用了现代大斜切边的设计手法，集合铝合金饰条、密码锁、皮革、橡皮漆等生产工艺，在于每一个可见之处都呈现出追求完美的设计态度彰显。

Z02 series gives executive desk, filing cabinets, meeting, negotiation table of each series of products such as inside and outside and repair, artistically, the entire series in appearance design elements, in the tradition of the traditional office furniture in detail using the modern design methods of chamfered edge, set aluminum alloy decorations, combination lock, leather, rubber paint, such as the production process, is that every visible place present a pursuit of the perfect design attitude.





## Z02 SERIES MANAGER DESK



斜切面做工细致，干净利落，各个细节都需要经过精心的制作工艺来保障品质，全方位满足功能性需求的同时，更多地兼顾到使用者对便捷、舒适及效率的追求。  
Diagonal plane do manual work is careful, clean, every details need to carefully craft to guarantee quality, omni-directional meets functional requirements at the same time, more consideration to the users in the pursuit of convenience, comfort and efficiency.



会议桌造型采用了斜切的设计元素，两侧底部对称式支撑下脚设计，不仅让整体感觉更加厚重，而且在结构上与台面相呼应，带来稳重大气视觉冲击力。  
Table model adopted the beveled design elements, on both sides of the symmetric support waste at the bottom of the design, not only make whole feels more thick, and on the structure and Taiwan faces echo, sedate atmosphere visual impact.







## N01 SERIES

N01系列产品的外观设计以曲面、斜边为主，设计师将西方设计理念与东方办公哲学完美融合，从外观、材质、色彩到功能、配置，于每一个细节之处呈现东西方文化的碰撞与相融。

N01 series product appearance design is given priority to with curved surface, bevel edge, the designer will be the perfect fusion of western design concept and philosophy of the east office, from the appearance, texture, color to the function, configuration, in every detail of east and west culture collision and compatibility.



## N01 SERIES FILE CABINET

文件柜通过梯形的分隔设计增加了线条对空间的分割，让整个外观方正而灵动，移动红色分隔板更是让不同厚度、不同材质形成对比。

Filing cabinets by trapezoidal design increased the line of the division of the space, make the whole appearance of the founder and clever, built-in can move a partition is to let red contrast of different thickness, different material, make a file cabinet more flexible.





## R01 SERIES

R01系列产品设计工艺上追求现代简约风格，通过大小斜切的块面组合，让极具层次感结构更加现代时尚。使用皮革、铝合金进行点缀搭配，皮革与板材在色泽与触感上的兼容性，赋予了主管桌一种沉着内敛的从容特性。

R01 series product design technology pursue the modern contracted style, by the size of the block surface combination, let the structure of the very layer sense more modern fashion. Use leather, aluminium alloy to do ornament collocation, leather and plank are in color and tactile compatibility, gave the executive desk a kind of calm and restrained and quiet character.



R01系列是基于航空母舰的大气、厚重、沉稳，将极具现代感的斜切面元素作为设计语言，直抒壮志凌云的壮阔胸臆，镌刻出有气度的办公空间。

The R01 series is based on aircraft carriers. As a design language, the modern diagonal elements are used as the design language. To express my ambition, with the office space of the gas degree.



## B01 SERIES

B01主管桌通过完美的设计，展示了其独特的风格，我们始终坚守自己的设计理念，风雨无阻，打造您所满意的产品。

B01 executive desk has demonstrated its unique style through perfect design. We always adhere to our design philosophy, come rain or shine, and build the products you are satisfied with.



## FILE CABINET

文件柜结合各种收纳形式，有效利用柜体空间，解决办公空间收纳需求。

The document counter combines various forms to effectively use the cabinet space to solve the demand of office space.





## 001 SERIES

001系列通过金属脚的穿插逐层递进，勾勒出丰富的空间层次和光影效果，绽放极具现代感的中式之美；同时，采用左右对称的处理方式，台面悬挑形式，烘托独特的视觉感官体验。

001 series is progressive through the interspersed layers of metal feet, which delineates the rich spatial hierarchy and light and shadow effect, and unfolds the beauty of the modern Chinese style. At the same time, use the left and right symmetrical processing mode, mesa suspension form, foil unique visual sense experience.

## 001 SERIES FILE CABINET

沿用了大班台的悬挑设计元素，底部采用金属作为支撑下脚，让整体感觉更加稳固，利落大方的线条设计，带来颇具视觉冲击力的震撼效果。

Use the desk cantilever design elements, using metal as support at the bottom of the waste, make whole feels more solid, agile and easy line design, 's visual impact shock effect.





## M02 SERIES

主台面采用悬挑设计，辅台保留了常规放置主机的位置和基本收纳抽屉，顶板围边的方式，让空间收纳更有条理及便捷。

The main table adopts the suspension design, and the auxiliary platform retains the position of the regular host and the basic storage drawer, and the way of the edge of the roof, so that the space is more organized and convenient.



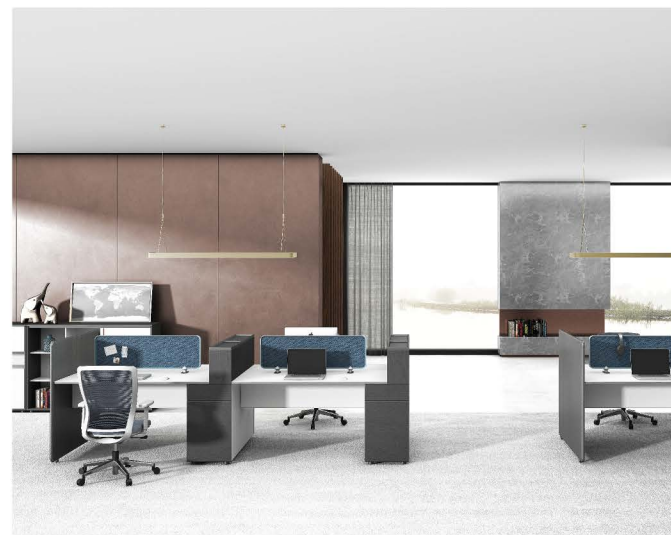
## E01 SERIES

E系列的设计元素采用了容克斯F.13波纹设计、旅行箱元素，同时也吸收了服装中经久不衰的条纹时尚元素，设计师在材料上更是突破平面视觉打造立体材料，让用户从视觉、触觉上体验不同的办公空间。

The design elements of the E series adopt junks F. 13 corrugated design and suitcase elements, and at the same time absorb the long-lasting striped fashion elements in clothing. The designer breaks through the plane vision to create three-dimensional materials in terms of materials, so that users can experience different office experience from the visual and tactile aspects.







## E01 SERIES

E01系列支撑脚有三种不同脚型选择，可以根据不同的职员空间选择不同的脚型和组合方式，满足用户对办公空间的需求。  
E01 series of supporting feet have three different foot types, which can be selected according to different staff space and combination, to meet the needs of users for office space.





## Q02 SERIES

Q02从外观、材质、功能都呈现出以用户体验为中心的产品设计理念，工作台面使用条纹封边条加金属饰条镶嵌，桌脚扣布侧板定制pvc封边。

Q02 from appearance, material, function is presented for the center with the user experience of product design concept, countertops use stripe Mosaic, metal decorations, edge banding legs ammonites cloth side panel custom PVC edge banding.

## Q02 SERIES MANAGER DESK



采用梯形屏风板作为侧板支撑，开放式和封闭式收纳组合的辅台。  
uses the trapezoidal screen plate as support, the side panel of open and closed to receive auxiliary units.





## Q02 SERIES OFFICE TABLE

由于外观结构的不同采取下嵌式的桌上屏，定位柜提供实用的支撑和收纳功能，台面采用欧麦橡木和白色两个颜色拼接而成。

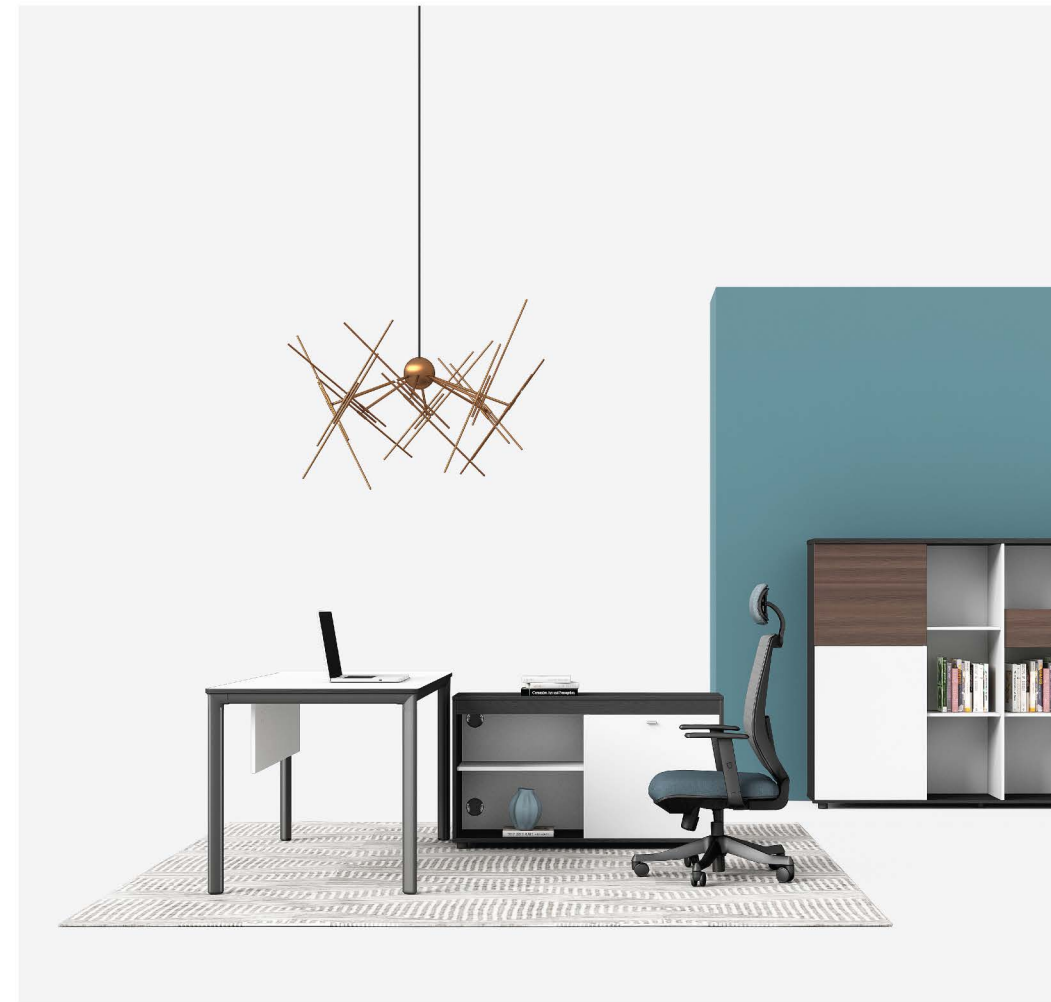
Due to the appearance of the structure of the embedded under different to the table screen, positioning ark to provide practical support and receive a function, mesa adopts two color wood grain and solid color patchwork.





## A02 SERIES MANAGER DESK

A02从外观设计、原料材质、功能设置都呈现出以办公环境为主体，以用户体验为中心的产品理念。  
A01 shows the product concept from the office environment as the main body and the user experience as the core from the appearance design, raw material material and function setting.





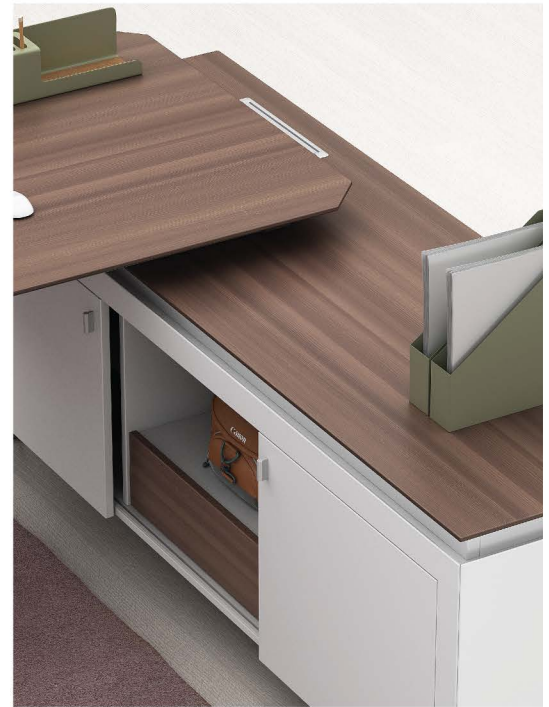
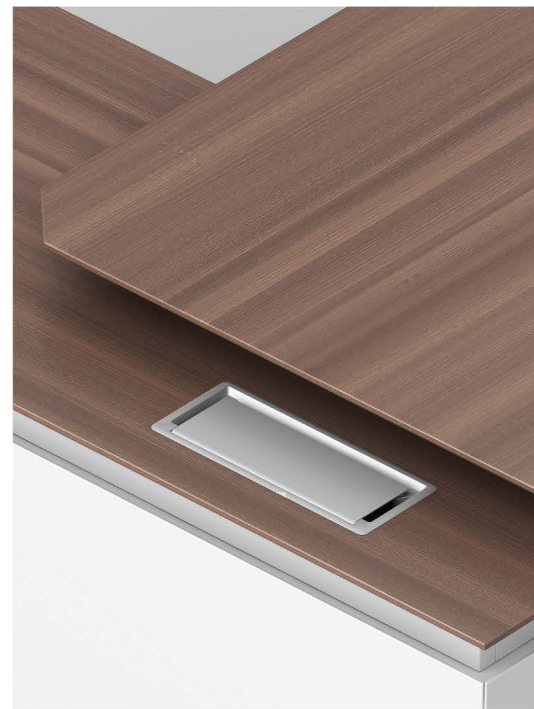






## Y02 SERIES MANAGER DESK

台面的切角、隐藏式走线、辅台收腰设计，每一个细节都精心设计。  
The cutting Angle of mesa, hidden line, auxiliary units waist design, every detail design.



Y02采用多种材料、颜色的混搭型设计为主，可以为您的办公空间注入了一股时尚的元素，满足使用者对空间的人性化需求，寻找自己的领地，成就心中伟大的梦想。

Y01 use a variety of materials, color mix design is given priority to, can for your office space into a fashionable element, meet the demand of users of space of human nature, to find their own territory, achievement great dream in my heart.









## PF SERIES

简洁而精致，简单而快乐，简明而富有美感，我们一直在寻求新的艺术与工作的表达方式，尽可能将它的抽象美转化为具象的实体，营造出一种舒适、高雅极具现代感的办公空间。

Concise and delicate, simple and happy, concise and rich aesthetic feeling, we have been working to find new art and expression, as far as possible will it ChouXiangMei into representational entity, create a comfortable and elegant office space that has contemporary feeling extremely.





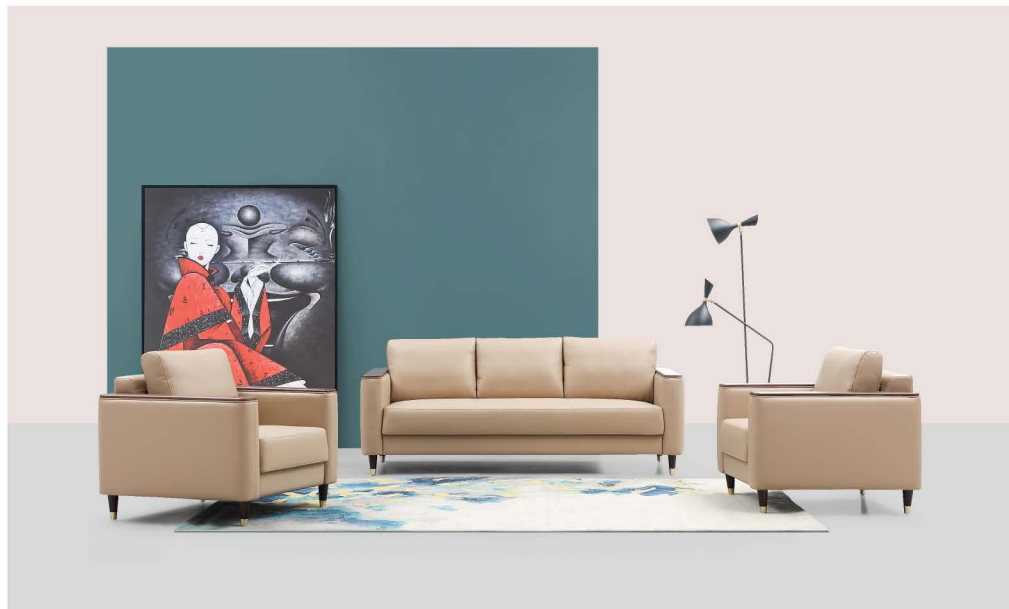
## T02 SERIES FILE CABINET

创新工艺与产品外观的完美结合，用艺术的思维赋予时尚生活更生动的感触，在这里，您可以任意选择一种颜色，一种组合，一种高度与空间组合搭配，让您感受收纳也可以拥有如此自由。  
Innovation technology and the perfect combination of product appearance, with the touch of the art of thinking gives fashion life more vivid, here, you can choose any one color, a combination of a highly after combination collocation, let you feel to receive also can have such freedom.





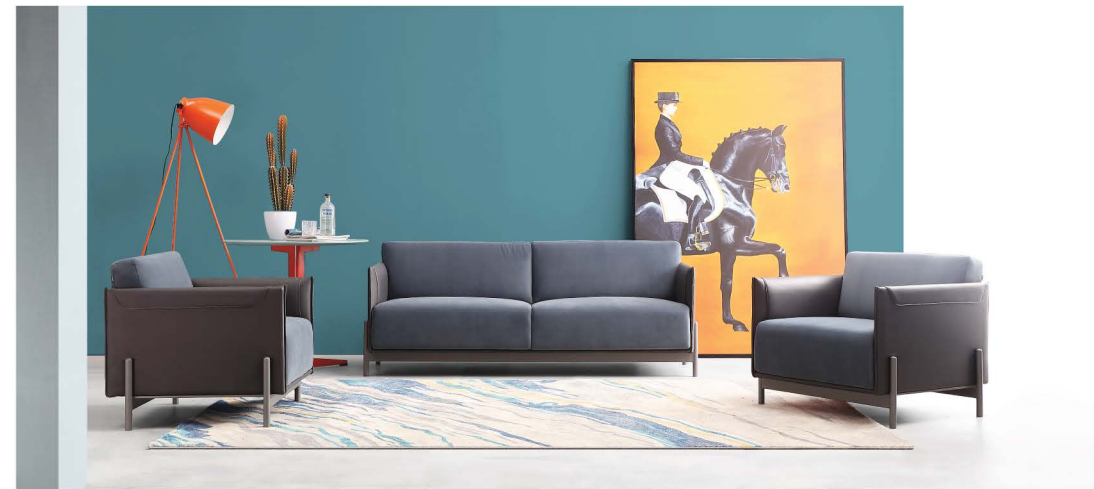




## SOFA

简练实用的设计，金属、皮纹与布料相结合的材质混搭，为您营造简洁、时尚的办公环境，让用户在纷繁紧张的工作节奏中感觉轻松舒适的感觉。

Simple and practical design, combined with metal, leather and fabric materials, creates a simple and fashionable office environment for you, making users feel relaxed and comfortable in the busy and tense work rhythm.



以用户的舒适度为主，结合人体工学设计理念，手感丰满柔软，富有弹性、自然而然的舒服享受。  
Based on user's comfort level, combined with ergonomic design concept, it feels plump, soft, elastic and naturally comfortable.

## SOFA & TEA TABLEA

满足实用功能的同时，在外型设计、面料材质、构造结构上设计师突破了传统的设计局限，以美学、材料应用、人体工学相结合的设计来满足用户需求。

While satisfying the practical function, the designer breaks through the traditional design limitation in appearance design, fabric material and construction structure, and satisfies the user demand with the combination of aesthetics, material application and ergonomics.



## SOFA & TEA TABLEA

时尚的艺术品，一切都基于设计师的奇思妙想，简洁的金属脚结合皮纹质感，简约雅致更具层次感。

Fashionable artwork, everything is based on the fancy of stylist, concise metal foot combines skin grain simple sense, contracted and refined have administrative levels feeling more.







MYP-04A-Z



MYP-12A1



MYP-23A1



MYP-19A1



MYP-13A1



MYP-018C1



MYP-05B1



MYP-18A1



MYP-16A1



MYP-17A1



MYW-01A



MYW-03A1



MYW-03B1



MYW-09A1



MYW-11B1



MYW-12C1



MYW-17A1



MYW-15B1



MYW-15C1